

1 Tools needed to install the column mount kit.

a. Wrench 5/16 & 1/2



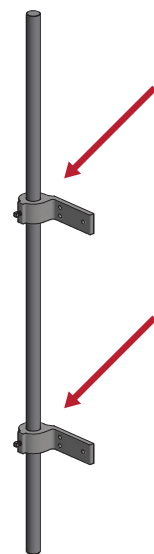
Check packaging for damage before opening.
a. If damage is found contact shipping company.
b. If no damage is found continue.

WARNING

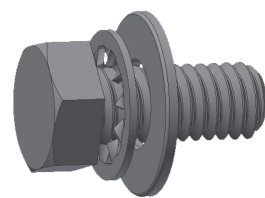
You must use the extension arm limiting bracket when column-mounting the Type F & B Donut Depositor to any floor model stand alone fryer. If you do not, the fryer may tip over when the depositor is swung away from the fryer, resulting in serious burns, injury, or death.

Preparing to Mount the Depositor on the Column

Before you can column-mount the Type F donut depositor to a fryer, you must secure the fryer to the floor, install the column, and install the swing arm. (see operators manual for further instructions)

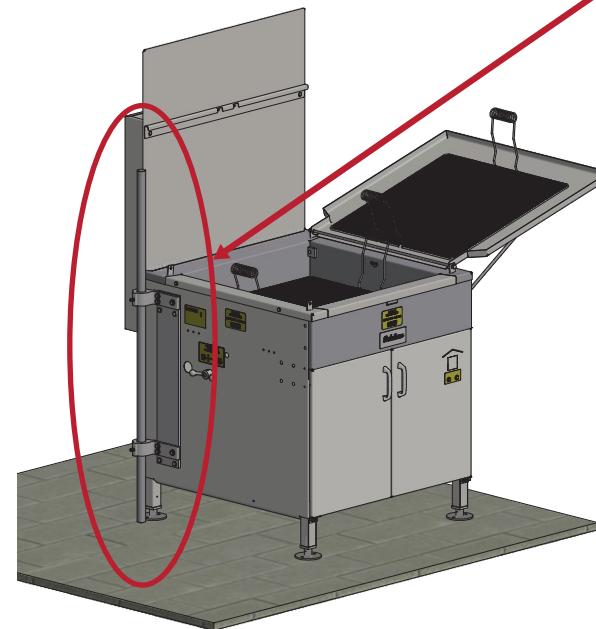


2 Slide the column mounting brackets onto the column.



5/16-18 X1 hex-head screw, star washer and flat washer

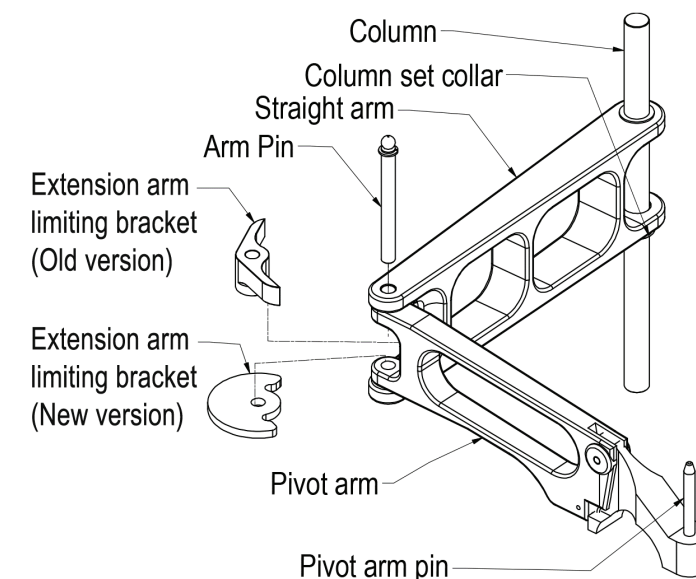
X6



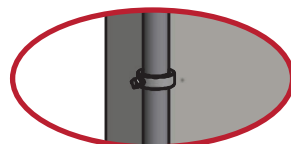
3 Align the holes in the column mounting brackets, with the holes in the fryer frame assembly.

4 Secure the mounting brackets to the frame using the six 5/16-18 x 1" hex-head screws provided, with the 1/2 wrench.

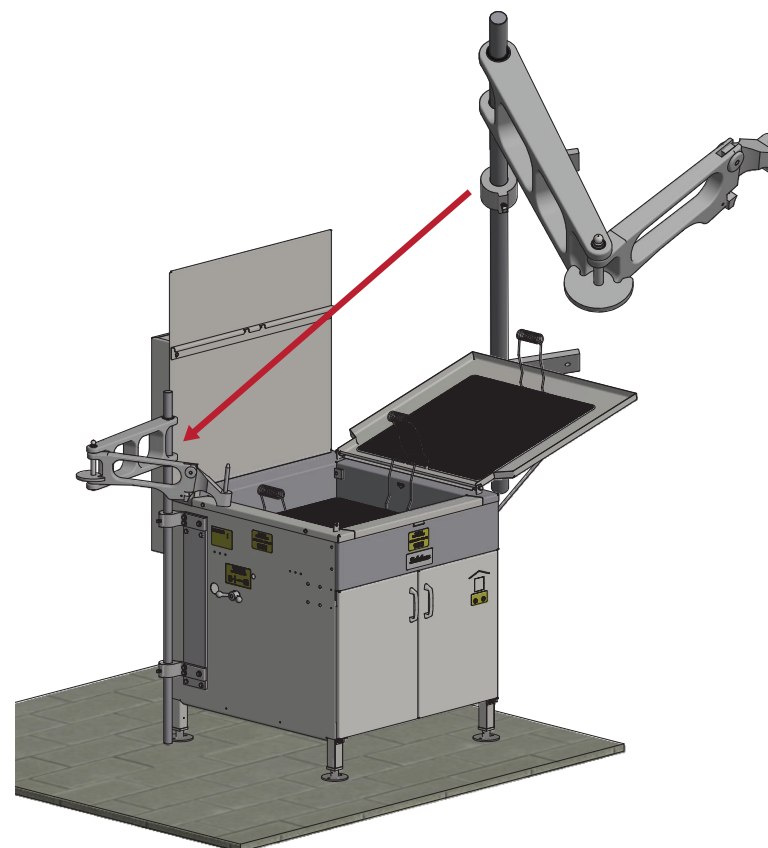
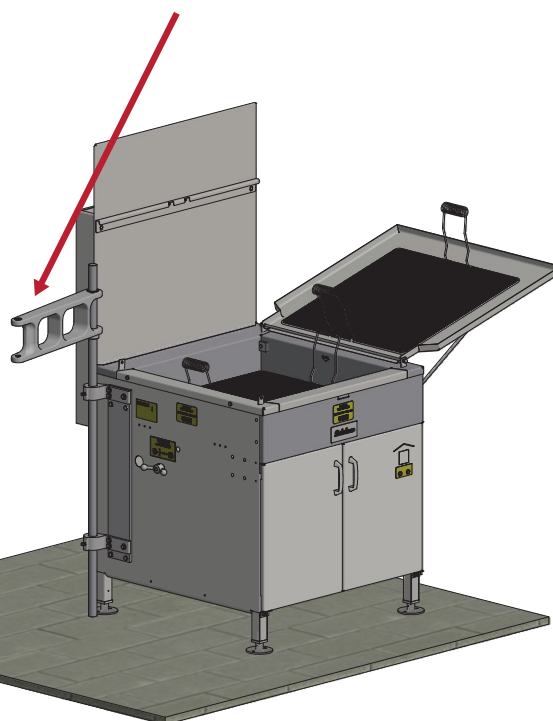
5 With the column resting on the floor, secure the column by tightening the two 5/16-18 x 1" square head set screws (provided) in the mounting brackets, with the 5/16 wrench.



6 Slide the set collar onto the column and tighten the set screw with a 5/16 wrench.



7 Slide the straight-arm section onto the column.



8 Put the pivot arm section between the legs of the straight arm.

9 Put the extension arm-limiting bracket between the legs of the pivot arm. The holes in the extension arm limiting bracket, pivot arm, and straight-arm must line up.

10 Slide the arm pin through the holes in the straight-arm, pivot arm, and extension arm-limiting bracket.

11 Slide the straight arm up the column far enough for the depositor to clear the fryer when it is mounted. To hold the straight arm in place, slide the set collar up the column and tighten the setscrew.